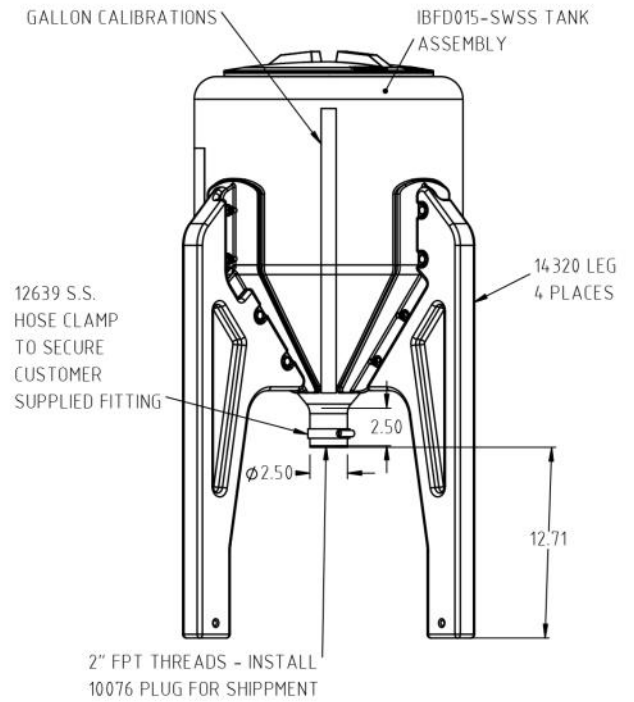
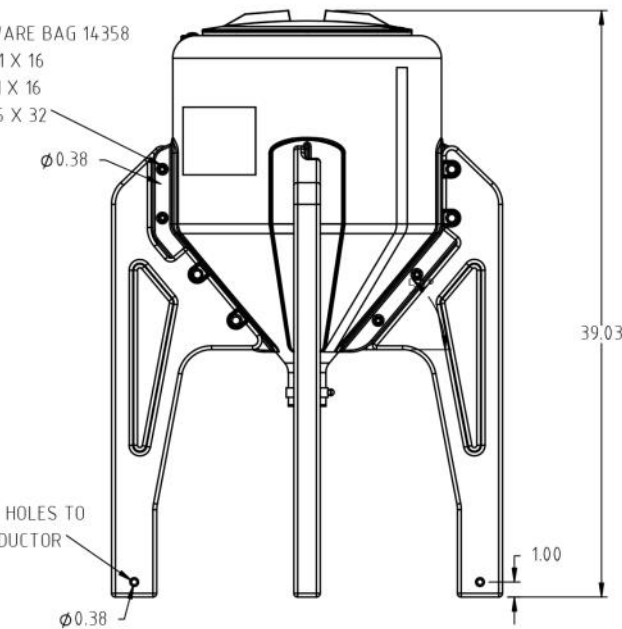
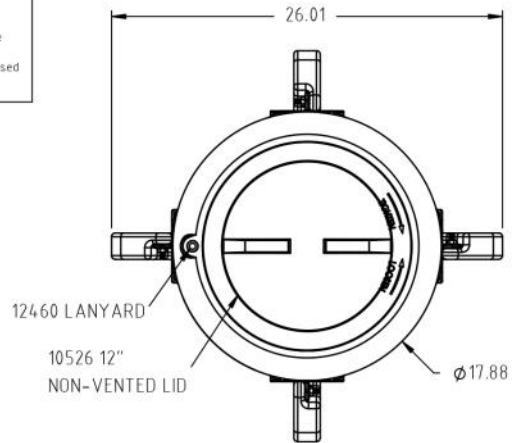
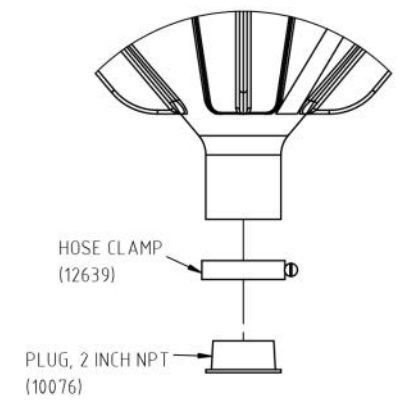
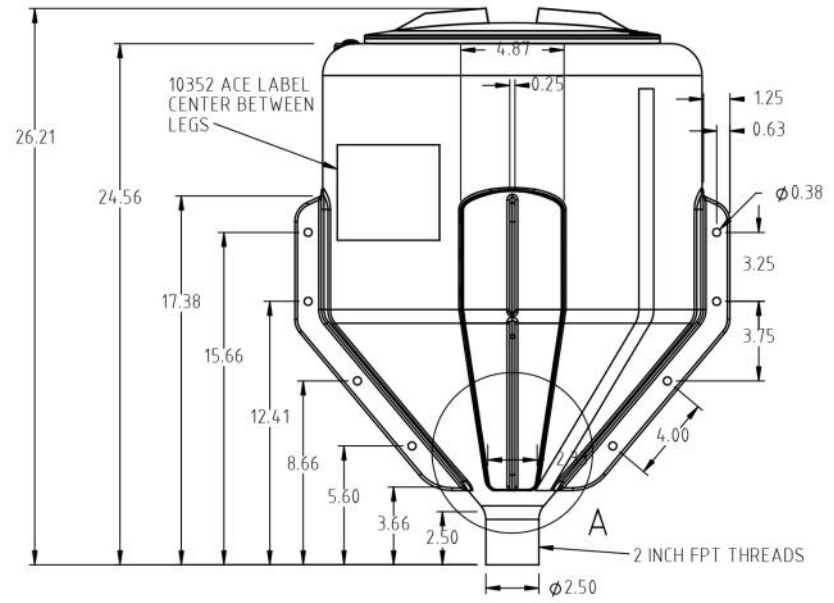
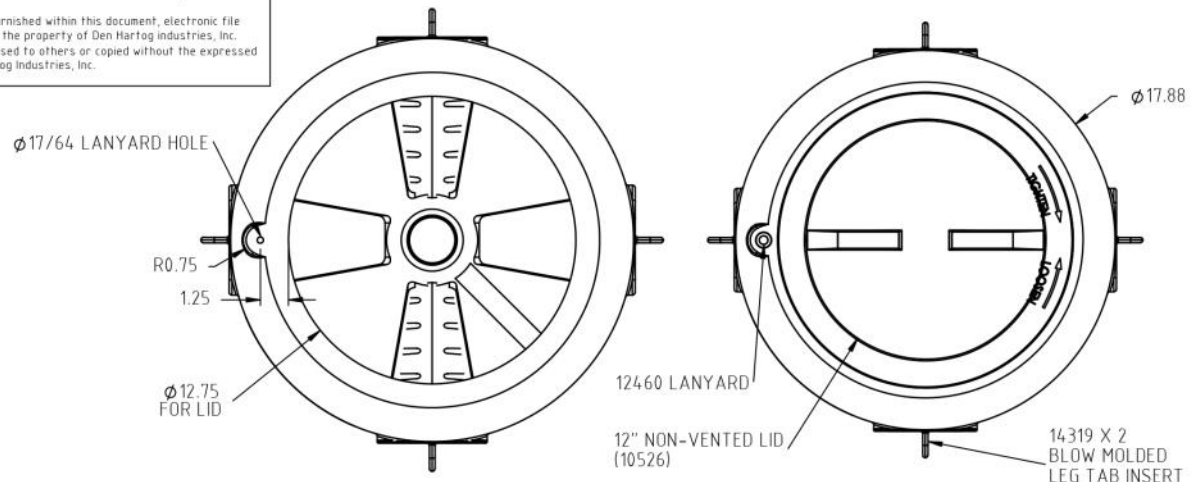


Copyright. All information furnished within this document, electronic file or design correspondence is the property of Den Hartog Industries, Inc. and shall not be used, disclosed to others or copied without the expressed written consent of Den Hartog Industries, Inc.



REV		DESCRIPTION	BY / DATE	CCN	DRAWN / DATE ADH 6/2/15	MATERIAL
					APPRD. / DATE REH 7/16/15	
ALL DIMENSIONS ARE IN DECIMAL INCHES TOLERANCES UNLESS OTHERWISE SPECIFIED			THIRD ANGLE PROJECTION ANSI 14.5M		SHOT WEIGHT:	NOTES:
POLYETHYLENE		METAL	+		SHIPPING WEIGHT:	
±1% @ 68°F		DECIMAL ± .125" FRACTION ± 1/4" ANGLE ± 1°	+		FINISH:	
DESCRIPTION					15 GALLON BLOW MOLDED INDUCTOR AND LEGS	
SCALE					PART NO.	
N.S.						

Copyright. All information furnished within this document, electronic file or design correspondence is the property of Den Hartog Industries, Inc. and shall not be used, disclosed to others or copied without the expressed written consent of Den Hartog Industries, Inc.



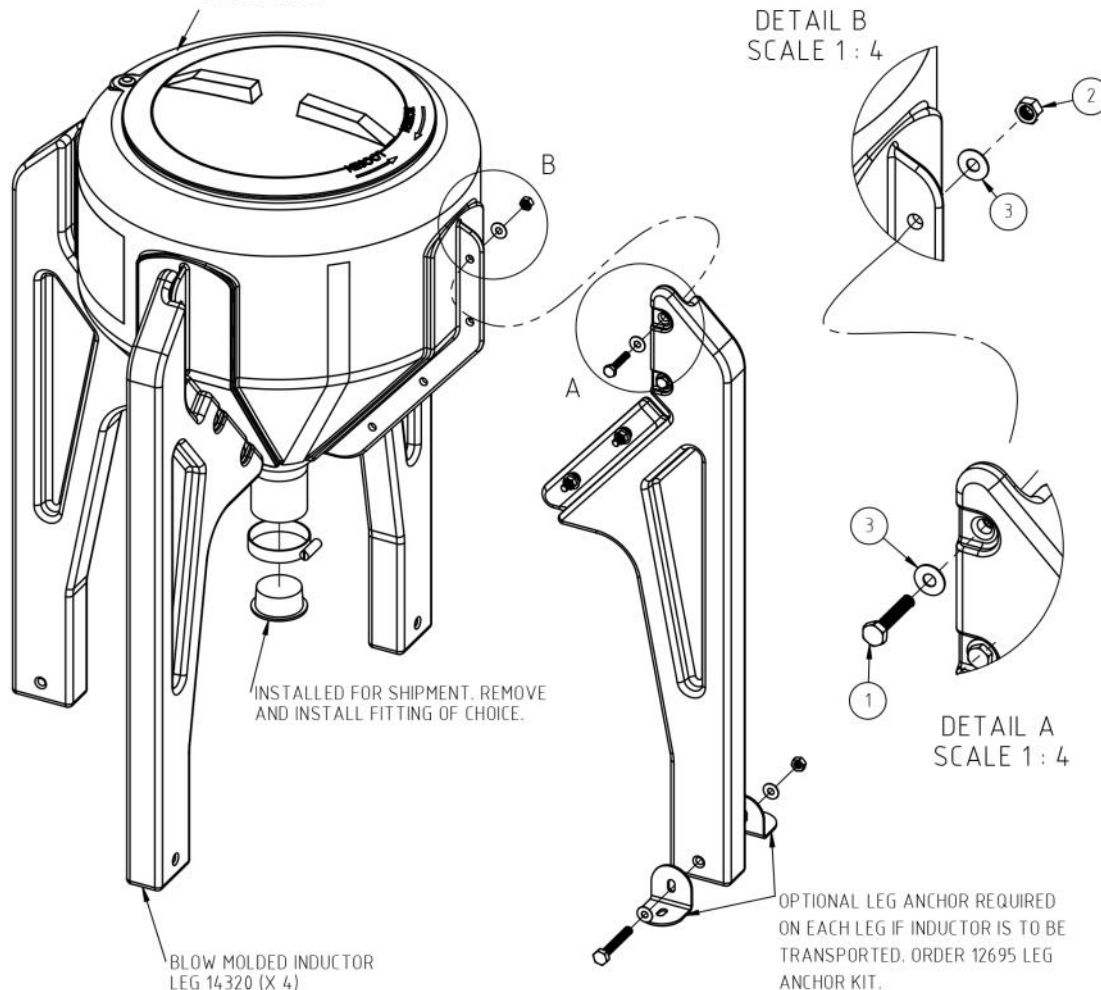
				DRAWN / DATE ADH 6/2/15	MATERIAL 80001 PELLETS		
				APPRD. / DATE REH 7/16/15			
REV	DESCRIPTION	BY / DATE	CCN				
ALL DIMENSIONS ARE IN DECIMAL INCHES TOLERANCES UNLESS OTHERWISE SPECIFIED		THIRD ANGLE PROJECTION ANSI 14.5M		SHOT WEIGHT: 6.9 LB	NOTES: 1. .140 WALL	DESCRIPTION 15 GALLON BLOW MOLDED INDUCTOR TANK ASSEMBLY	
POLYETHYLENE ±1% @ 68°F		METAL DECIMAL ± .125" FRACTION ± 1/4" ANGLE ± 1°		SHIPPING WEIGHT:			SCALE N.S.
				FINISH:			

Copyright. All information furnished within this document, electronic file or design correspondence is the property of Den Hartog Industries, Inc. and shall not be used, disclosed to others or copied without the expressed written consent of Den Hartog Industries, Inc.

BLOW MOLDED 10,15,20 GALLON INDUCTOR TANK (IBFD010-SWSS SHOWN)
 IBFD010-SWSS
 IBFD015-SWSS
 IBFD020-SWSS

ASSEMBLY INSTRUCTIONS:

- 1.) UNPACK INDUCTOR COMPONENTS. YOU SHOULD HAVE THE INDUCTOR TANK ASSEMBLY, FOUR LEGS AND ONE HARDWARE BAG. A TOTAL OF SIX PIECES ARE INCLUDED IN THE BOX.
- 2.) TO INSTALL THE LEGS IT IS RECOMMENDED THAT THE INDUCTOR BE PLACED ON ONE SIDE. FASTEN EACH LEG AS SHOWN WITH FOUR(4) 5/16" X 1-1/4" BOLTS, TWO (2) FLAT WASHERS AND ONE (1) LOCKNUT. DO NOT TIGHTEN ANY BOLTS AT THIS TIME.
- 3.) AFTER ALL FOUR LEGS ARE LOOSELY INSTALLED, TIP INDUCTOR UPRIGHT ON THE LEGS TO LEVEL THEM. TIGHTEN EACH BOLT UNTIL SNUG.
- 4.) INDUCTORS ARE SHIPPED WITH A PLUG IN THE OUTLET TO PROTECT THE THREADS. LOOSEN HOSE CLAMP, REMOVE SHIPPING PLUG AND REPLACE WITH A 2" NPT THREADED FITTING OF YOUR CHOICE. USE TEFLON TAPE ON THE THREADS. THREAD FITTING IN UNTIL JUST SNUG. DO NOT OVER TIGHTEN! SECURE CONNECTION WITH HOSE CLAMP PROVIDED.
- 5.) BEFORE USE IT IS RECOMMENDED THAT INDUCTOR BE CHECKED FOR LEAKS, RINSED OUT AND DRIED.
- 6.) INDUCTORS THAT ARE TO BE TRANSPORTED MUST HAVE THE OPTIONAL 12695 ANCHOR KIT INSTALLED AS ILLUSTRATED AND SECURELY FASTENED IN PLACE.
- 7.) INDUCTOR TANKS ARE DESIGNED FOR CONTAINMENT OF LIQUIDS UP TO 1.7 SPECIFIC GRAVITY (1.7 TIMES THE WEIGHT OF WATER).

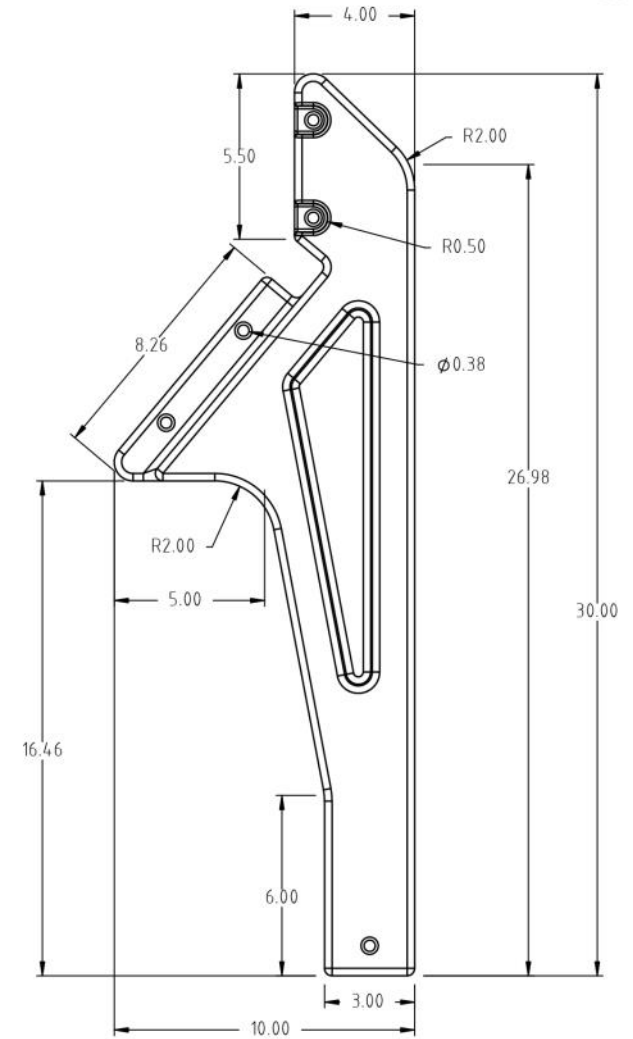
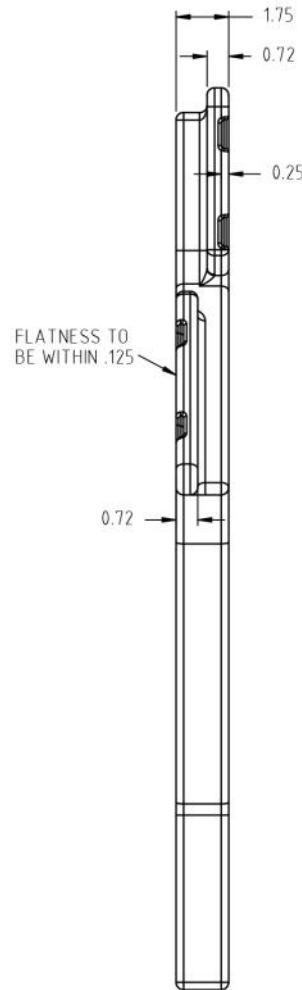
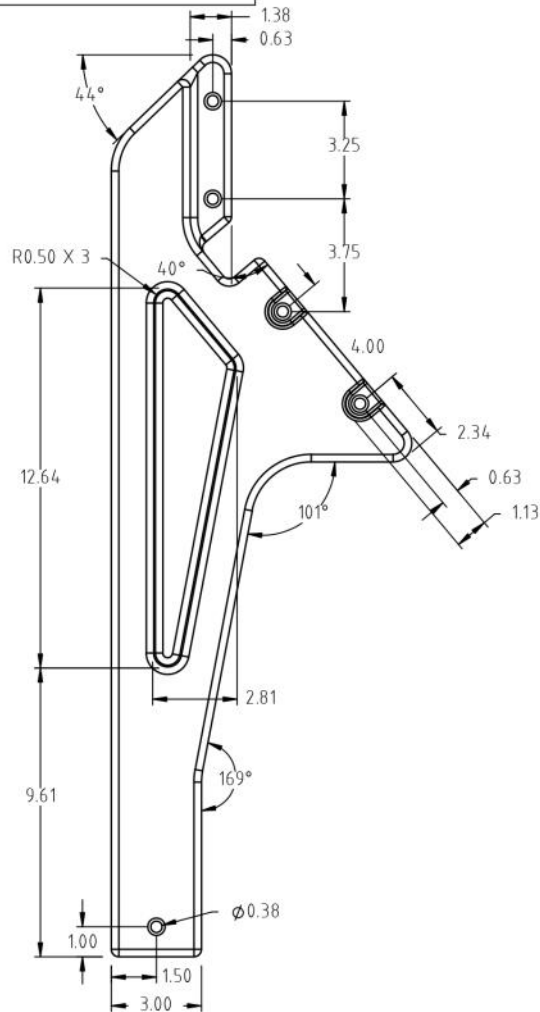


10, 15, 20 GALLON INDUCTOR HARDWARE BAG 14358

KEY	PART NUMBER	DESCRIPTION	QTY.
1	SJ10031	BOLT, 5/16" X 1-1/2" SS	16
2	SJ10011	NUT, 5/16" NYLOK SS	16
3	SJ11095	WASHER, 5/16" FLAT SS	32
4	IBFD10-15-20-ASSY	10,15,20 GAL. ASSY. INSTRUCTIONS	1

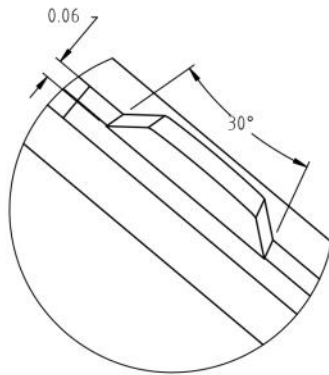
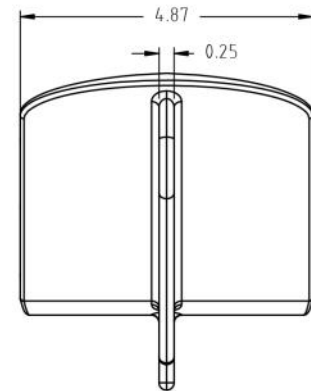
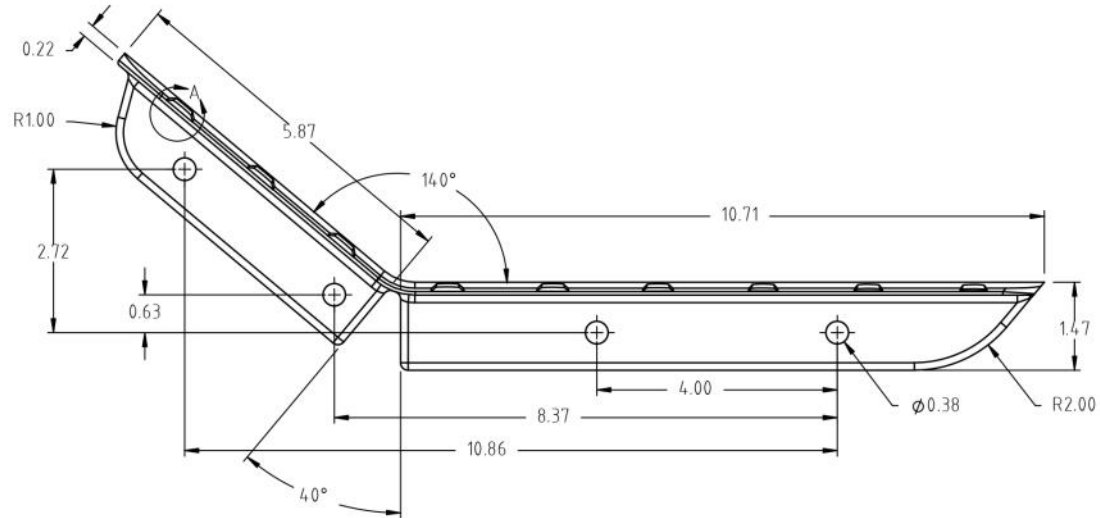
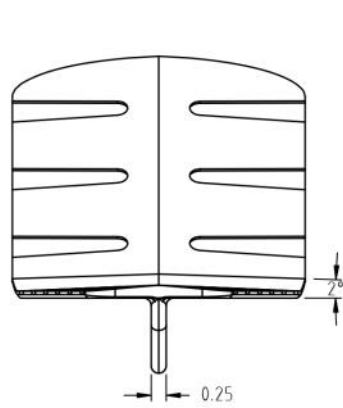
REV	DESCRIPTION	BY / DATE	CCN	DRAWN / DATE ADH 5/6/15	MATERIAL	DESCRIPTION 10,15,20 GALLON BLOW MOLDED INDUCTOR ASSEMBLY INSTRUCTIONS
				APPRD. / DATE REH 7/16/15		
ALL DIMENSIONS ARE IN DECIMAL INCHES TOLERANCES UNLESS OTHERWISE SPECIFIED		THIRD ANGLE PROJECTION ANSI 14.5M		SHOT WEIGHT:		SCALE N.S.
POLYETHYLENE ±1% @ 68°F		METAL DECIMAL ± .125" FRACTION ± 1/4" ANGLE ± 1°		SHIPPING WEIGHT:		
				FINISH:		PART NO.

Copyright. All information furnished within this document, electronic file or design correspondence is the property of Den Hartog industries, Inc. and shall not be used, disclosed to others or copied without the expressed written consent of Den Hartog Industries, Inc.

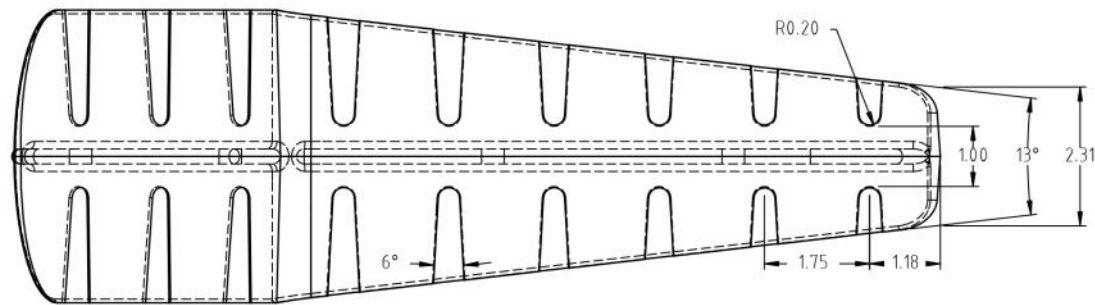


			DRAWN / DATE ADH 5/5/15	MATERIAL 80041 / 80007		
			APPRD. / DATE REH 7/16/15			
REV	DESCRIPTION	BY / DATE	CCN	SHOT WEIGHT: 2.0 LB.	NOTES: 1.) .150 WALL THICKNESS	DESCRIPTION BLOW MOLDED LEG - SHORT
ALL DIMENSIONS ARE IN DECIMAL INCHES TOLERANCES UNLESS OTHERWISE SPECIFIED		THIRD ANGLE PROJECTION ANSI 14.5M		SHIPPING WEIGHT: 2.0 LB.		SCALE N.S.
POLYETHYLENE ±1% @ 68°F		METAL DECIMAL ± .125" FRACTION ± 1/4" ANGLE ± 1°		FINISH:		

Copyright. All information furnished within this document, electronic file or design correspondence is the property of Den Hartog industries, Inc. and shall not be used, disclosed to others or copied without the expressed written consent of Den Hartog Industries, Inc.



DETAIL A
SCALE 2 : 1



		DRAWN / DATE ADH 5/6/15		MATERIAL NATURAL HDPE		
		APPRD. / DATE REH 7/16/15				
REV	DESCRIPTION	BY / DATE	CCN	SHOT WEIGHT: .53 LBS.	DESCRIPTION LEG INSERT TAB - SHORT	
ALL DIMENSIONS ARE IN DECIMAL INCHES TOLERANCES UNLESS OTHERWISE SPECIFIED		THIRD ANGLE PROJECTION ANSI 14.5M		NOTES: 1. NATURAL COLOR	SCALE N.S.	
NOTE	TOLERANCE: .XXX ± .005" .XX ± .010 ANGLE ± 1°			SHIPPING WEIGHT:	PART NO.	
				FINISH: MACHINED		