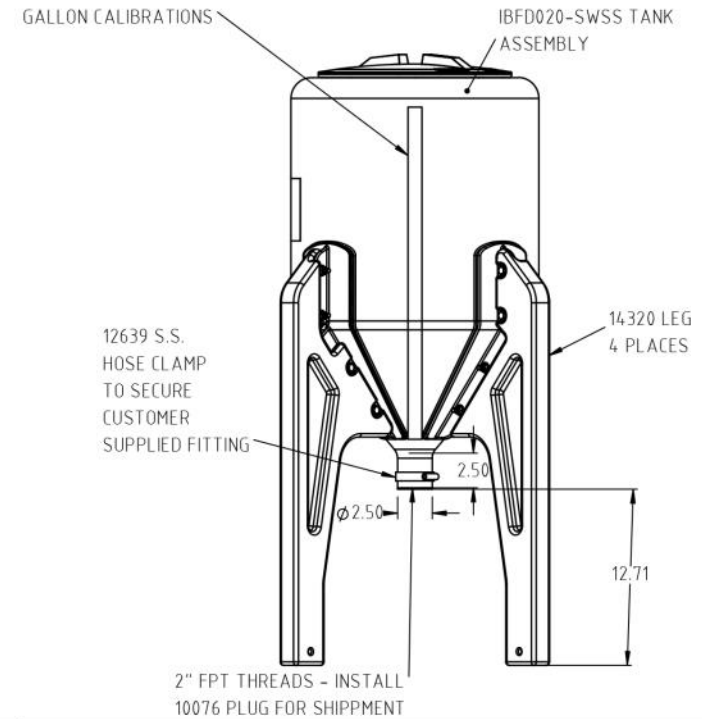
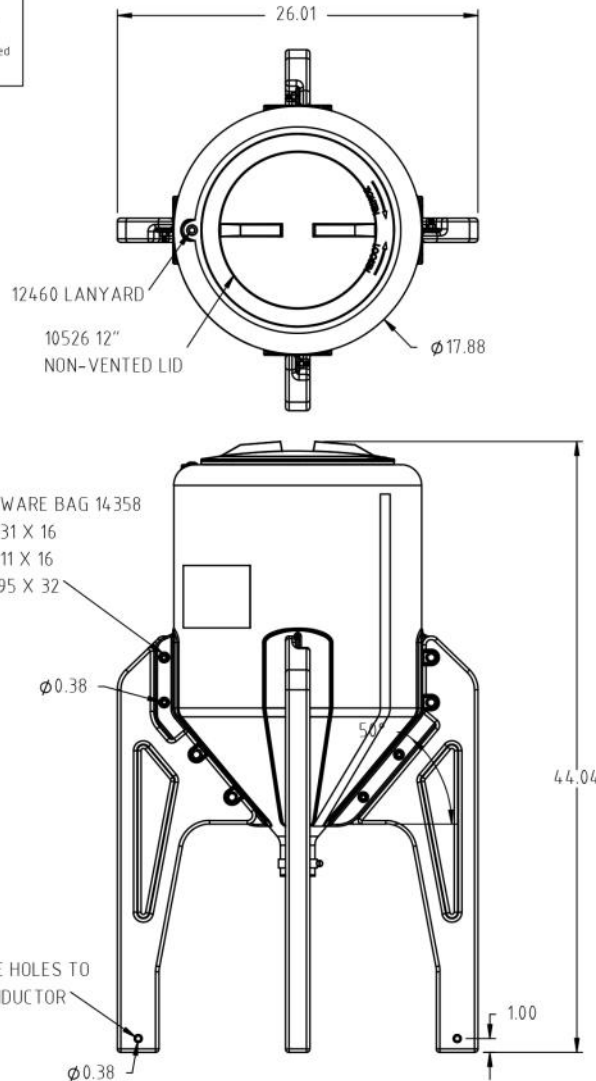
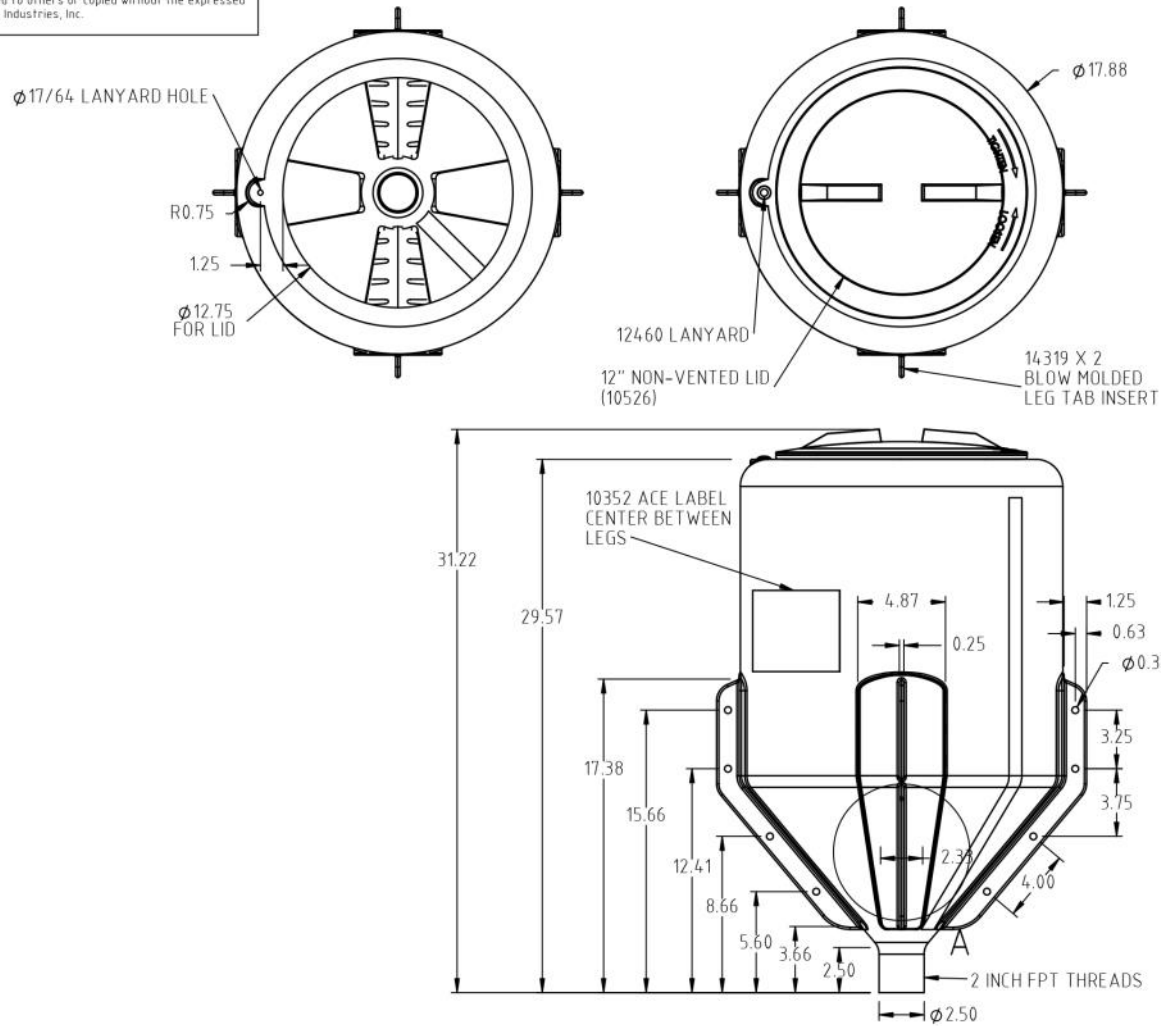


Copyright. All information furnished within this document, electronic file or design correspondence is the property of Den Hartog Industries, Inc. and shall not be used, disclosed to others or copied without the expressed written consent of Den Hartog Industries, Inc.



|   |             |   |                              |  |          |  |
|---|-------------|---|------------------------------|--|----------|--|
|   |             |   | DRAWN / DATE<br>ADH 6/2/15   | MATERIAL   |          |  |
|   |             |   | APPRD. / DATE<br>REH 7/16/15 |  |          |  |
| REV   | DESCRIPTION | BY / DATE   | CCN                          |  |          |  |
| ALL DIMENSIONS ARE IN DECIMAL INCHES<br>TOLERANCES UNLESS OTHERWISE SPECIFIED |             | THIRD ANGLE PROJECTION<br>ANSI 14.5M                      |                              | SHOT WEIGHT:   | NOTES:   |  |
| POLYETHYLENE  |             | METAL<br>DECIMAL ± .125"<br>FRACTION ± 1/4"<br>ANGLE ± 1° |                              | SHIPPING WEIGHT:                                       |          |  |
| ±1% @ 68°F  |             |   |                              | FINISH:  |          |  |
|   |             |   |                              | DESCRIPTION<br>20 GALLON BLOW MOLDED INDUCTOR AND LEGS |          |  |
|   |             |   |                              | SCALE<br>N.S.  | PART NO. |  |

Copyright. All information furnished within this document, electronic file or design correspondence is the property of Den Hartog industries, Inc. and shall not be used, disclosed to others or copied without the expressed written consent of Den Hartog Industries, Inc.



|   |             |   |                              |                               |   |          |
|---|-------------|---|------------------------------|-------------------------------|---|----------|
|   |             |   | DRAWN / DATE<br>ADH 6/2/15   | MATERIAL<br><br>80001 PELLETS |   |          |
|   |             |   | APPRD. / DATE<br>REH 7/16/15 |                               |   |          |
| REV   | DESCRIPTION | BY / DATE   | CCN                          |                               |   |          |
| ALL DIMENSIONS ARE IN DECIMAL INCHES<br>TOLERANCES UNLESS OTHERWISE SPECIFIED |             | THIRD ANGLE PROJECTION<br>ANSI 14.5M                      |                              | SHOT WEIGHT:<br>8.3 LB        | DESCRIPTION<br>20 GALLON BLOW MOLDED INDUCTOR TANK ASSEMBLY |          |
| POLYETHYLENE<br>±1% @ 68°F  |             | METAL<br>DECIMAL ± .125"<br>FRACTION ± 1/4"<br>ANGLE ± 1° |                              | SHIPPING WEIGHT:              |   |          |
|   |             | FINISH:   |                              | NOTES:<br>1. .145 WALL        | SCALE<br>N.S.   | PART NO. |

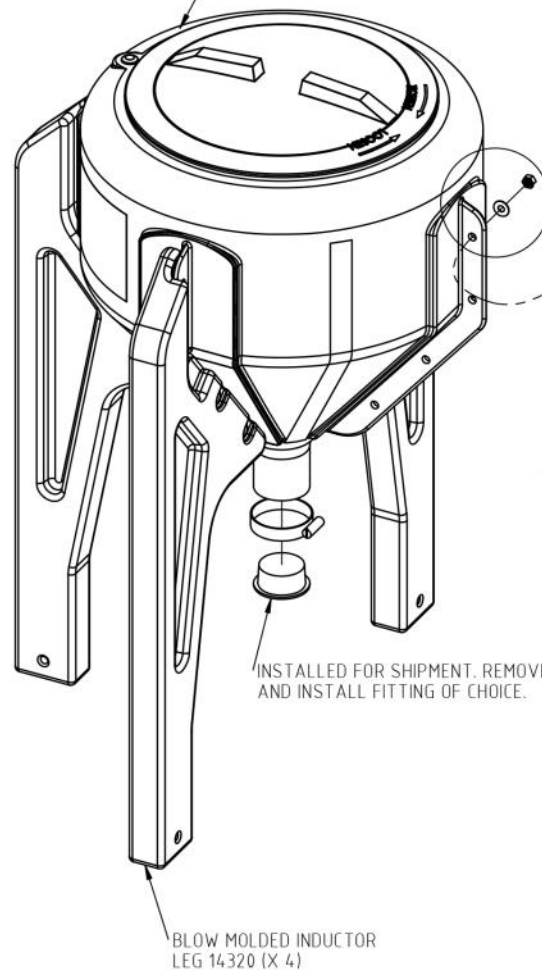
Copyright. All information furnished within this document, electronic file or design correspondence is the property of Den Hartog Industries, Inc. and shall not be used, disclosed to others or copied without the expressed written consent of Den Hartog Industries, Inc.

BLOW MOLDED 10,15,20 GALLON INDUCTOR TANK (IBFD010-SWSS SHOWN)  
 IBFD010-SWSS  
 IBFD015-SWSS  
 IBFD020-SWSS

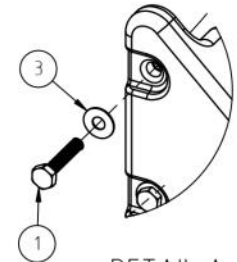
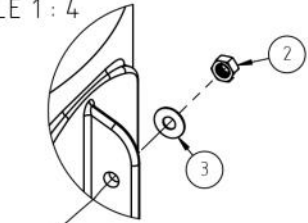
IBFD10-15-20-ASSY

**ASSEMBLY INSTRUCTIONS:**

- 1.) UNPACK INDUCTOR COMPONENTS. YOU SHOULD HAVE THE INDUCTOR TANK ASSEMBLY, FOUR LEGS AND ONE HARDWARE BAG. A TOTAL OF SIX PIECES ARE INCLUDED IN THE BOX.
- 2.) TO INSTALL THE LEGS IT IS RECOMMENDED THAT THE INDUCTOR BE PLACED ON ONE SIDE. FASTEN EACH LEG AS SHOWN WITH FOUR(4) 5/16" X 1-1/4" BOLTS, TWO (2) FLAT WASHERS AND ONE (1) LOCKNUT. DO NOT TIGHTEN ANY BOLTS AT THIS TIME.
- 3.) AFTER ALL FOUR LEGS ARE LOOSELY INSTALLED, TIP INDUCTOR UPRIGHT ON THE LEGS TO LEVEL THEM. TIGHTEN EACH BOLT UNTIL SNUG.
- 4.) INDUCTORS ARE SHIPPED WITH A PLUG IN THE OUTLET TO PROTECT THE THREADS. LOOSEN HOSE CLAMP, REMOVE SHIPPING PLUG AND REPLACE WITH A 2" NPT THREADED FITTING OF YOUR CHOICE. USE TEFLON TAPE ON THE THREADS. THREAD FITTING IN UNTIL JUST SNUG. DO NOT OVER TIGHTEN! SECURE CONNECTION WITH HOSE CLAMP PROVIDED.
- 5.) BEFORE USE IT IS RECOMMENDED THAT INDUCTOR BE CHECKED FOR LEAKS, RINSED OUT AND DRIED.
- 6.) INDUCTORS THAT ARE TO BE TRANSPORTED MUST HAVE THE OPTIONAL 12695 ANCHOR KIT INSTALLED AS ILLUSTRATED AND SECURELY FASTENED IN PLACE.
- 7.) INDUCTOR TANKS ARE DESIGNED FOR CONTAINMENT OF LIQUIDS UP TO 1.7 SPECIFIC GRAVITY (1.7 TIMES THE WEIGHT OF WATER).



DETAIL B  
 SCALE 1 : 4



DETAIL A  
 SCALE 1 : 4

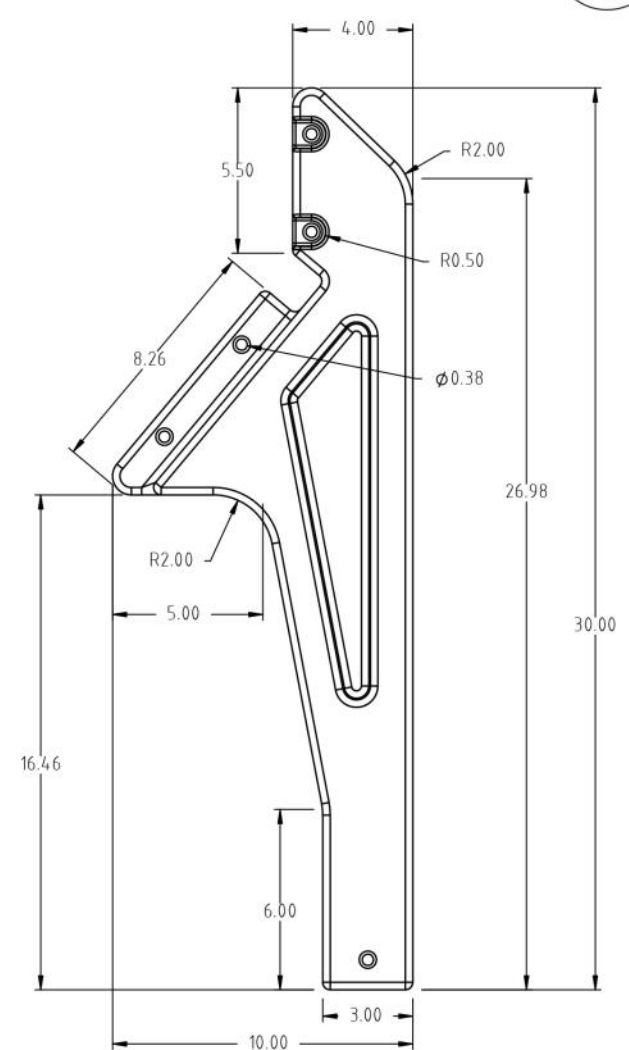
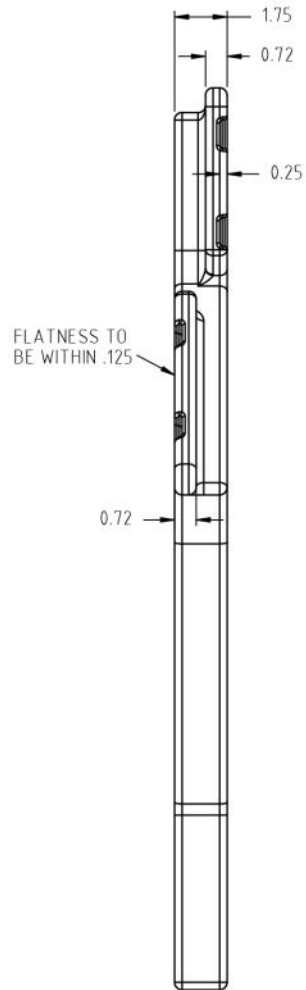
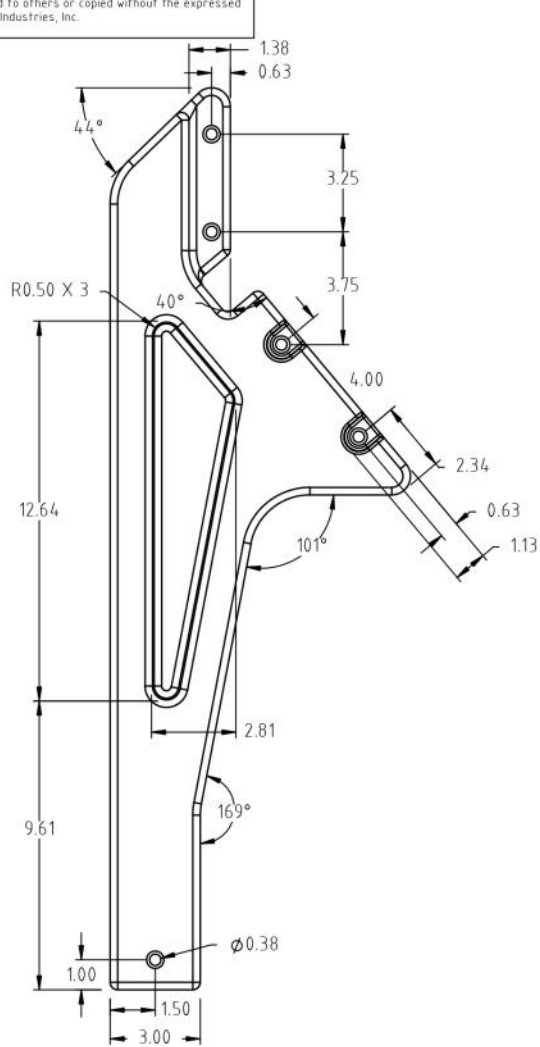
OPTIONAL LEG ANCHOR REQUIRED ON EACH LEG IF INDUCTOR IS TO BE TRANSPORTED. ORDER 12695 LEG ANCHOR KIT.

10, 15, 20 GALLON INDUCTOR HARDWARE BAG 14358

| KEY | PART NUMBER       | DESCRIPTION                      | QTY. |
|-----|-------------------|----------------------------------|------|
| 1   | SJ10031           | BOLT, 5/16" X 1-1/2" SS          | 16   |
| 2   | SJ10011           | NUT, 5/16" NYLOK SS              | 16   |
| 3   | SJ11095           | WASHER, 5/16" FLAT SS            | 32   |
| 4   | IBFD10-15-20-ASSY | 10,15,20 GAL. ASSY. INSTRUCTIONS | 1    |

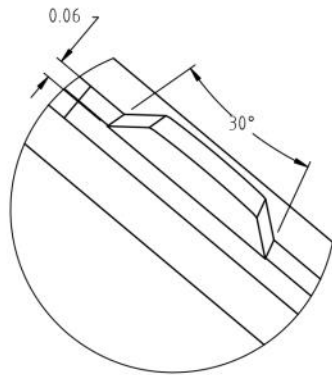
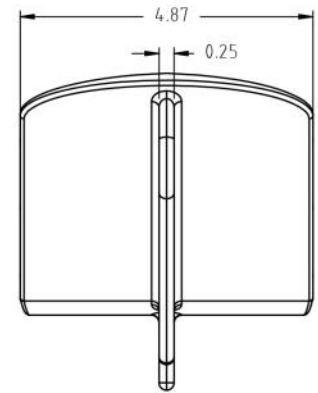
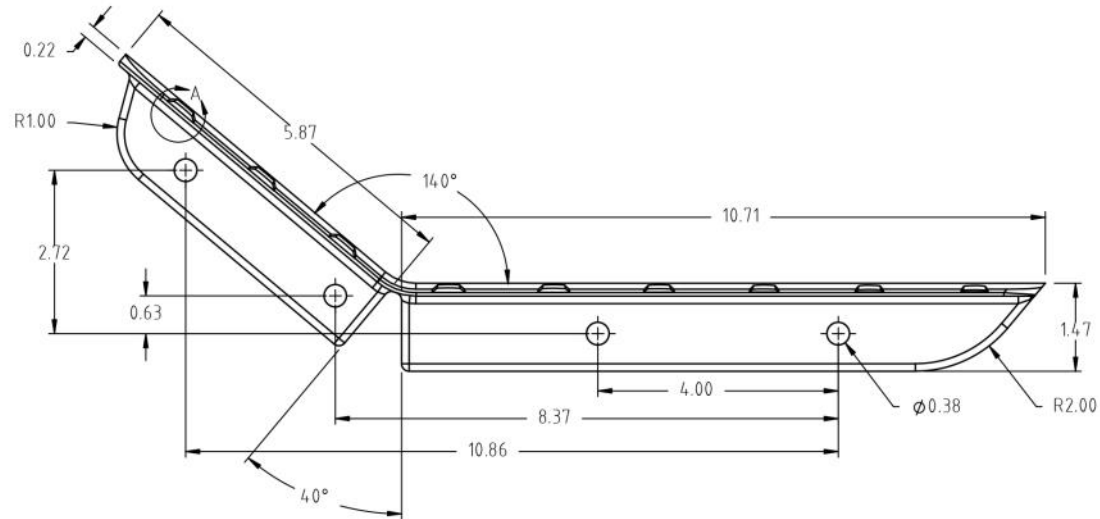
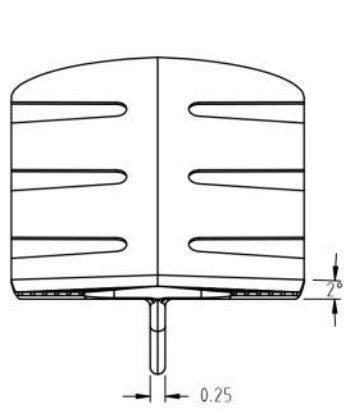
|  |             |   |          |                  |   |
|--|-------------|---|----------|------------------|---|
| DRAWN / DATE<br>ADH 5/6/15   |             |   | MATERIAL |                  | DESCRIPTION<br>10,15,20 GALLON BLOW MOLDED INDUCTOR ASSEMBLY INSTRUCTIONS |
| APPRD. / DATE<br>REH 7/16/15   |             |   |          |                  |   |
| REV  | DESCRIPTION | BY / DATE   | CCN      | NOTES:           |   |
| ALL DIMENSIONS ARE IN DECIMAL INCHES TOLERANCES UNLESS OTHERWISE SPECIFIED |             | THIRD ANGLE PROJECTION<br>ANSI 14.5M                      |          | SHIPPING WEIGHT: |   |
| POLYETHYLENE<br>±1% @ 68°F   |             | METAL<br>DECIMAL ± .125"<br>FRACTION ± 1/4"<br>ANGLE ± 1° |          | FINISH:          |   |
|  |             |   |          | SCALE<br>N.S.    |   |
|  |             |   |          | PART NO.         |   |

Copyright. All information furnished within this document, electronic file or design correspondence is the property of Den Hartog industries, Inc. and shall not be used, disclosed to others or copied without the expressed written consent of Den Hartog industries, Inc.

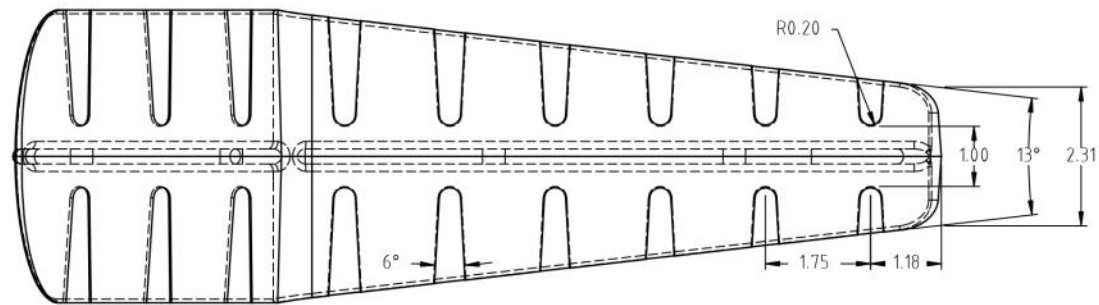


|   |             |   |     |                               |                                   |  |          |
|---|-------------|---|-----|-------------------------------|-----------------------------------|--|----------|
|   |             |   |     | DRAWN / DATE<br>ADH 5/5/15    | MATERIAL<br>80041 / 80007         |  |          |
|   |             |   |     | APPROD. / DATE<br>REH 7/16/15 |                                   |  |          |
| REV   | DESCRIPTION | BY / DATE   | CCN |                               |                                   |  |          |
| ALL DIMENSIONS ARE IN DECIMAL INCHES<br>TOLERANCES UNLESS OTHERWISE SPECIFIED |             | THIRD ANGLE PROJECTION<br>ANSI 14.5M                      |     | SHOT WEIGHT:<br>2.0 LB.       | NOTES:<br>1.) .150 WALL THICKNESS | DESCRIPTION<br>BLOW MOLDED LEG - SHORT |          |
| POLYETHYLENE<br>±1% @ 68°F  |             | METAL<br>DECIMAL ± .125"<br>FRACTION ± 1/4"<br>ANGLE ± 1° |     | SHIPPING WEIGHT:<br>2.0 LB.   |                                   | SCALE<br>N.S.                          | PART NO. |
|   |             |   |     | FINISH:                       |                                   |  |          |

Copyright. All information furnished within this document, electronic file or design correspondence is the property of Den Hartog Industries, Inc. and shall not be used, disclosed to others or copied without the expressed written consent of Den Hartog Industries, Inc.



DETAIL A  
SCALE 2 : 1



|      |   |                                      |     |                              |                            |                                       |
|------|---|--------------------------------------|-----|------------------------------|----------------------------|---------------------------------------|
|      |   |                                      |     | DRAWN / DATE<br>ADH 5/6/15   | MATERIAL                   |                                       |
|      |   |                                      |     | APPRD. / DATE<br>REH 7/16/15 | NATURAL HDPE               |                                       |
| REV  | DESCRIPTION   | BY / DATE                            | CCN | SHOT WEIGHT:<br>.53 LBS.     | NOTES:<br>1. NATURAL COLOR | DESCRIPTION<br>LEG INSERT TAB - SHORT |
|      | ALL DIMENSIONS ARE IN DECIMAL INCHES<br>TOLERANCES UNLESS OTHERWISE SPECIFIED | THIRD ANGLE PROJECTION<br>ANSI 14.5M |     | SHIPPING WEIGHT:             |                            | SCALE<br>N.S.                         |
| NOTE | TOLERANCE:<br>.XXX ± .005"<br>.XX ± .010<br>ANGLE ± 1°                        |                                      |     | FINISH:<br>MACHINED          |                            | PART NO.                              |