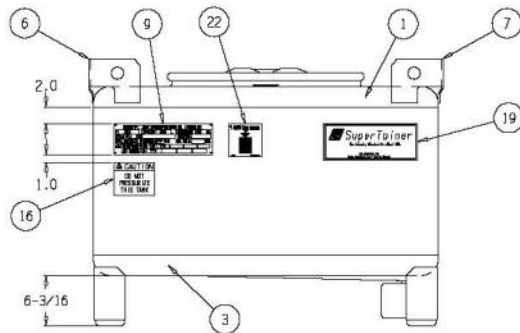
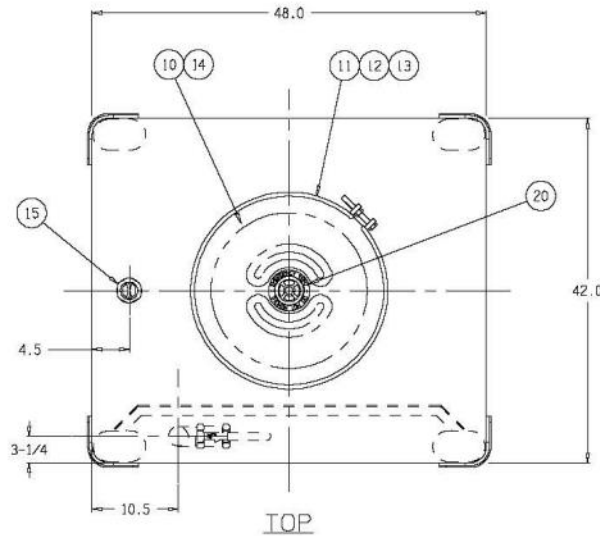
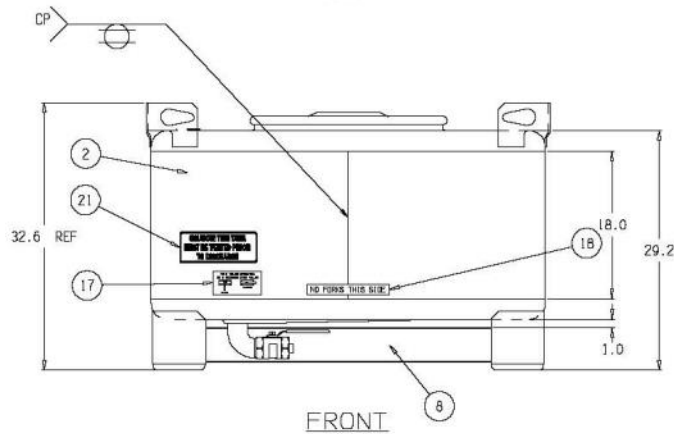


VALVE ASSEMBLY DETAIL
SCALE: NONE



LEFT SIDE



FRONT

REVISION				
NO.	DATE	DESCRIPTION	BY	APPD.
a	10/17/2008	CHANGE LIFTING LUGS	WRB	
b	04/10/2009	CHANGE PART 3	WRB	
c	05/12/2010	FITTING DIMENSION LOCATION CHANGED FROM 6" TO 4-1/2"	JOB	LT
d	06/30/2010	ADDED CAUTION DECAL	JOB	LT
e	11/22/2010	ADDED IBC STACKING DECAL	JOB	

NOTES:

1. TANK IS DESIGNED AND CONSTRUCTED IN ACCORDANCE WITH U.N. SPECIFICATIONS
2. TANK IS AIR TESTED AT 3 PSI
3. ALL WELDS CLEANED OF SLAG AND SPATTER
4. TANK INTERIOR AND EXTERIOR ARE ELECTRO-CLEANED
5. DRUM LID TO BE INSTALLED BY: STRIKE RING AROUND CIRCUMFERENCE WITH A Mallet THEN TIGHTEN THE BOLT WITH A WRENCH. REPEAT UNTIL BOLT TIGHTENING RESISTANCE DOES NOT CHANGE (REF: 40 LB-FT)
6. 2IN BUND TO BE INSTALLED 3/8 TO 1/2 ROTATION BEYOND SOLID GASKET CONTACT (REF: 30 LB-FT)

NO.	QTY.	PART NUMBER	DESCRIPTION
22	1	99700355	IBC STACKING DECAL - 1456KD (180 SUPERTAINER)
21	1	99700315	DECAL CAUTION VENT PRIOR TO DISCHARGE
20	1	99700248	DECAL EMERGENCY VENT
19	1	99700260	DECAL SUPERTAINER
18	1	99700247	DECAL NO FORKS THIS SIDE
17	1	99700248	DECAL REVERSE STEM VALVE OPEN/CLOSE
16	1	99700258	DECAL DO NOT PRESSURIZE
15	1	35901511	PLUG 2IN HEX HEAD WH EPDM GASKET 304SS
14	1	33100387	GASKET 22-5/16 DIA MULTIPURPOSE EPDM
13	1	35100330	NUT HEX 5/8-11 ZINC PLTD CS
12	1	35000183	BOLT HEX 5/8-11 X 5 FULL THRD ZINC PLTD
11	1	35900679	BOLTED CLAMP RING 22-5/16 ZINC-PLTD CS
10	1	35901163	LID 22-5/16 DOT 16GA W/RIEKE 304SS
9	1	36500069	PLATE UN SUPERTAINER 304SS DWG#B4462
8	1	35901173	VALVE GUARD 4-1/4 X 43-1/2 X 10GA 304SS
7	2	35901455	LIFTING LUG L 304SS
6	2	35901454	LIFTING LUG R 304SS
5	1	34200833	PLUG PVC 2IN NPT SQ HD
4	1	35400242	VALVE 2IN REV-STEM BY LOCK-HNDL 316SS SII
3	1	35902034	ASM BTM 42 X 48 X 10GA W/LEGS & SWEEP EL 304SS
2	1	33800200	SHELL 18 X 42 X 48WS X 10GA W/PVC 304SS
1	1	35902036	ASM TOP 42 X 48 X 10GA W/2IN WP 304SS

BILL OF MATERIALS

CUSTOMER:			
JOB:			
SCALE: 1:10	APPROVED BY:	DRAWN BY: JOB	
DATE: 10/07/2008	CHECKED BY: LT	DRAWING NUMBER: 18222e	
DESCRIPTION: 180 GAL 42 X 48 SUPERTAINER SS			