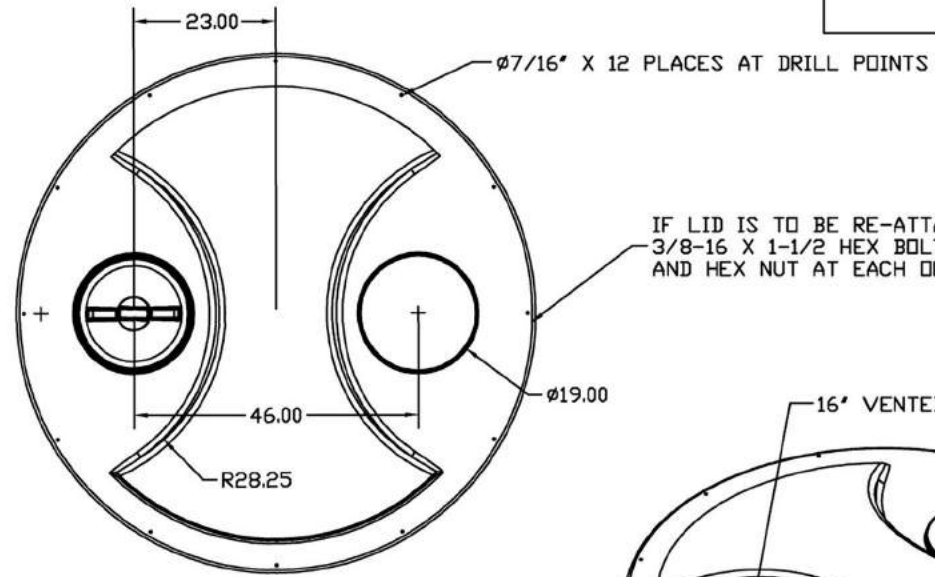
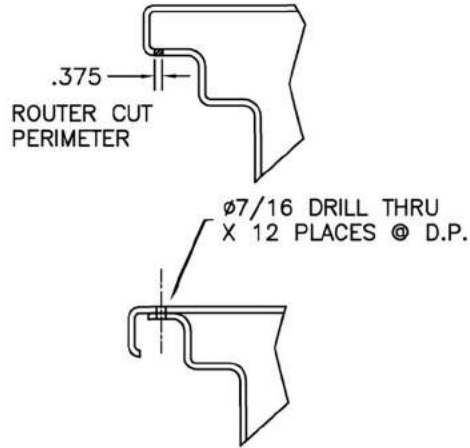
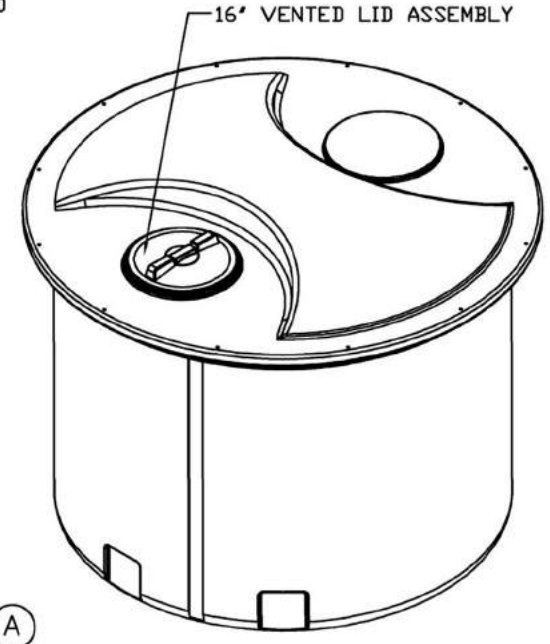


© DEN HARTOG INDUSTRIES, INC.
 Copyright. All information furnished within this document, electronic file or design correspondence is the property of Den Hartog Industries, Inc. and shall not be used, disclosed to others or copied without the expressed written consent of Den Hartog Industries, Inc.

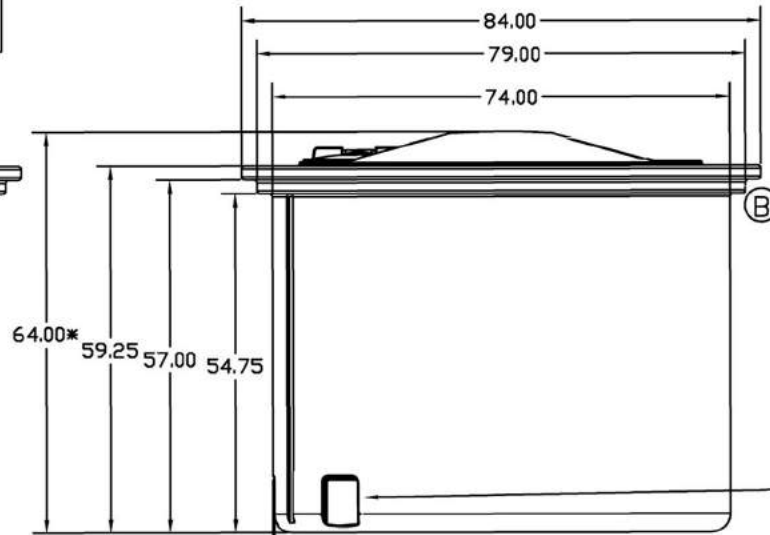
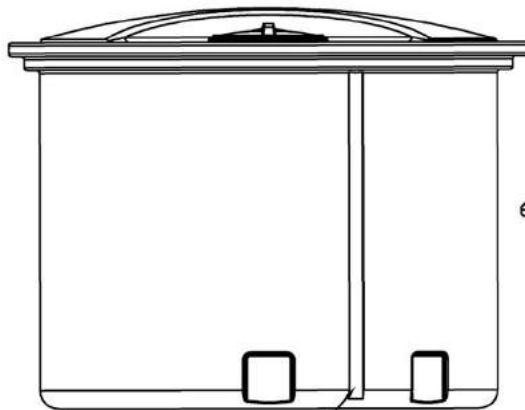
LID CUT AND DROP DETAIL



IF LID IS TO BE RE-ATTACHED, USE 3/8-16 X 1-1/2 HEX BOLT, 2 FLATWASHERS, AND HEX NUT AT EACH OF 12 HOLES



7.50 SQUARE GITTING SUMP 2 PLACES
 NO FITTING IS FURNISHED WITH STANDARD TANK.
 CONSULT FACTORY REGARDING FITTING OPTIONS.



*HEIGHT AFTER LID IS CUT AND DROPPED

C	WT CHANGED	CCN 1764	12/11/08	ADH	DRAWN / DATE	MATERIAL	CLIENT / DESCRIPTION	
B	MODIFIED RIM DESIGN		5/15/06	NVE	REH /9/18/00			HDPE OR EQUIVALENT REFERENCE MATERIAL DATA SHEET FOR SPECIFIC PROPERTIES.
A	FITTING REMOVED AS STD.		3/20/01		APPRD. / DATE	SCALE	PART NO.	
REV	DESCRIPTION		DATE	APPRD	DHJ /9/18/00			N.S.
ALL DIMENSIONS ARE IN DECIMAL INCHES TOLERANCES UNLESS OTHERWISE SPECIFIED ± 1% @ 68° F					THIRD ANGLE PROJECTION ANSI 14.5M		NOTES: 1. NOM. WALL @ .280 2. SHOT WEIGHT 275 LBS. @ 3. SHIPPING WEIGHT 277 LBS. 4. ALL RADII .50 UNLESS OTHERWISE SPECIFIED	