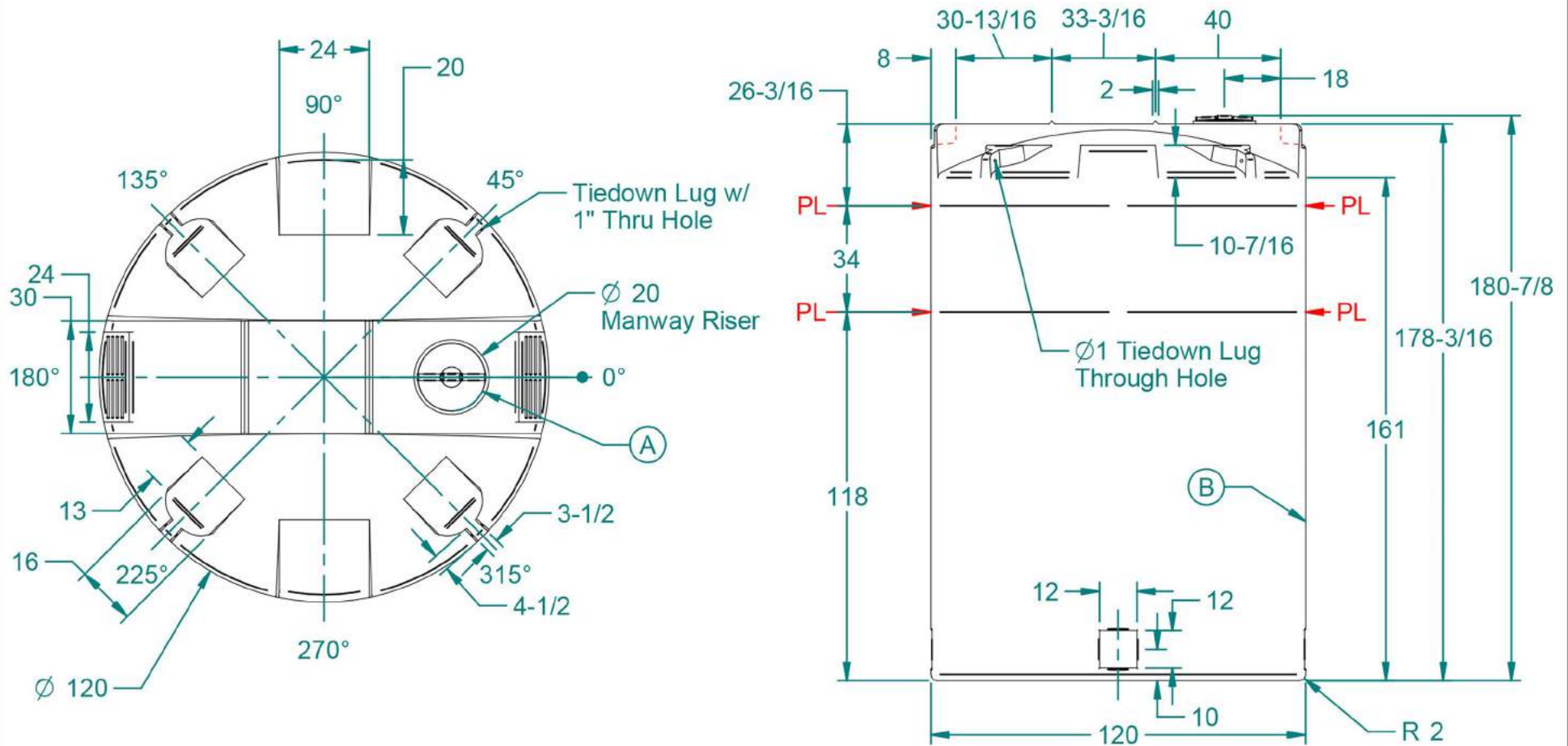


8000 Gallon Vertical Tank



A. 18" HDPE THREADED - VENTED MANWAY W/ 16" ACCESS, BLACK, W/ SS SCREWS (P/N 751016)

B. CALIBRATIONS AT 0° IN 500 GAL INCREMENTS

TANK FITTINGS TO BE INSTALLED AT TIME OF SHIPMENT AS PER DURA-CAST PROCEDURES

Weight: Dependent on specific gravity rating		NAME	DATE	
Wall Thickness: Dependent on specific gravity rating	Drawn By:	sarant	1/22/2013	
Customer Part No: N/A	Customer APPR			Customer:
Print Date: 12/23/2013	COPYRIGHT©2013 DURA-CAST PRODUCTS, INC.			PartTitle: 8000 Gallon Vertical Tank
Comments: - UNLESS OTHERWISE SPECIFIED DIMENSIONS ARE IN INCHES - Std Radii 3/16"	UNLESS OTHERWISE SPECIFIED TOLERANCES ARE DIMS > 10" $\pm 1\%$ DIMS < 10" ± 0.100 WALL THICKNESS $\pm 20\%$ FLATNESS $\pm .030$ in/in			File Name: 8000 Gallon Vertical Tank.dft
	Size A	Material: HDPE 942		Rev.
	Part No:	Do Not Scale	Sheet:	1 OF 1